

How do you get up to 30 computers from **one Host PC?**



With a **PC EXPANDER**, of course.

The **SD-800 Series PC Expander Terminals** let you connect up to **10 simultaneous but independent terminals** under Microsoft Windows™ XP, and up to **30 terminals** using any Microsoft Windows™ 2000 or 2003 Server OS!

Maximize your resources. Save on Electricity.



MVENT PHILIPPINES, INC.
(Market Venture Philippines, Inc.)

www.mvent.com.ph

SD-800 SERIES

PC Expander Terminals

Overview

The SD-800 Series is a network-based computing terminal. This allows multiple users to share the computing resources of a single computer's CPU, memory, HDD, etc.

Features

- Lower Total Deployment Cost (TDC) and Total Cost of Ownership (TCO)
- Hassle-free Maintenance
- Compatibility
- Simultaneous User Operation
- Small sleek design
- Energy efficient
- Supports high-resolution displays
- Environment-friendly
- High level of security and improved speed
- Total Solution

Benefits

Lower Total Deployment Cost (TDC) and Total Cost of Ownership (TCO)

Compared with the TCO for individual computers, the TCO for each device is minimal.

Purchasing one Host PC and multiple SD-800 Series Terminals as needed, would allow for 11 individual users access for a small price.

(One Host PC can support up to 30 terminals using a Windows Server OS and up to 10 terminals when using Windows XP)

Hassle-free Maintenance

Since there is no CPU, Memory, or HDD, no additional hardware or software maintenance would be required. The Host PC is the only device that requires additional maintenance.

Compatibility

Most programs that currently run on Windows and Linux will run on the SD-800 Series without compatibility issues. (3D games and resource-intensive applications like CAD will not perform well on this system).



Simultaneous User Operation

Both the Host PC and the SD-800 Series can run and execute the same applications independently. (Additional software licenses may be required)

Small sleek design

The space saving design creates more room for your office or desk area. It combines video, audio output, mouse, keyboard, and network functionalities into a small package.

Energy efficient

Consumes 5 watts (even lower) -- compared to a PC's 250 watt minimum, this amounts to significant savings in the long run.

Supports high-resolution displays

640x480, 800x600, 1024x768, 1280x1024 16-bit (65,536 colors).

Environment-friendly

The SD-800 Series create a quiet and cool environment due to the lack of a cooling fan or other moving parts.

High level of security and improved speed

SUNDE's proprietary terminal protocol and 128-bit encryption provides you with maximum security, and enhances the speed of computing through image caching and improved protocol performance.

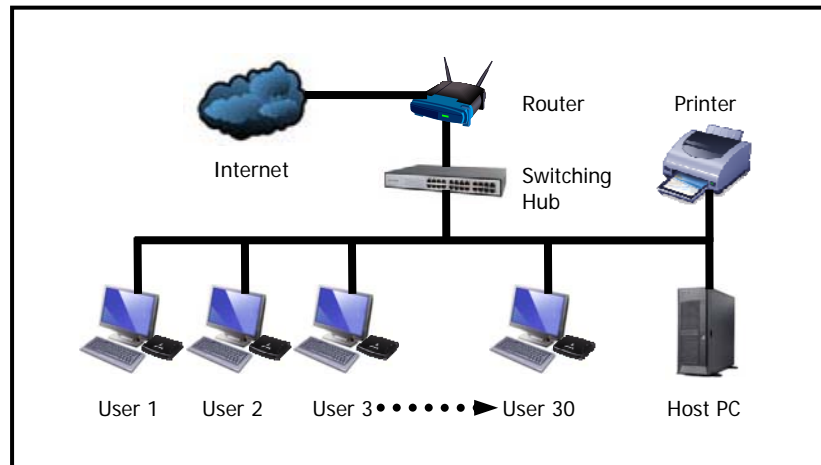
Total Solution

The SD-800 Series provide an all-in-one solution with a Network Terminal and Enterprise Terminal Server software developed in-house by SUNDE.

Ideal Industries

- Education
 - Healthcare
 - Finance
 - Government
 - Retail
- Tourism / Travel
 - Manufacturing
 - Construction
 - Call Centers
 - Data Entry Centers
- Libraries
 - Internet Cafés
 - Exhibits
 - Information Kiosks
 - Mobile Offices
- Training Center
 - Computer Lab

Connection



Minimum Recommended Host Configuration

We recommend to add 128 MB RAM per additional terminal.

Terminals					
	1-3	4-6	7-10	11-20	21-30
CPU	Intel Pentium 1.3 GHz	Intel Pentium 2.4 GHz	Intel Pentium 3.0 GHz	Intel Pentium 3.2 GHz	Intel Xeon 3.2 GHz
Memory	512 MB	768 MB	1 GB	2 GB	3 GB
HDD Speed	7,200 rpm	7,200 rpm	7,200 rpm	10,000 rpm	10,000 rpm

Specifications

Power: AC 110V ~ 220V 50/60 Hz, DC 5V/2A
Size: 168mm x 30mm x 125mm
Weight: 250g
Top: Power switch

Front: Power LED, Network Connection LED, Operation LED
Rear: AC input, audio out, video out, PS/2 keyboard, PS/2 mouse, LAN Port

Supported OS:

Windows 2000 Professional, Windows XP Home, Windows XP Professional, Windows XP Media, Windows 2000 Server, Windows 2003 Server

